



COST and ISCH Domain

Short Overview about COST

Dr Marc Caball,
Chair of the ISCH Domain Committee

**COST Action IS1007 Cutting edge research event
14th November 2013, COST Office, Brussels**



What is COST?

COST is the oldest and widest European intergovernmental framework for transnational Cooperation in Science and Technology.

For more than 40 years COST has supported networking of nationally funded research activities across all its Member countries (35 + 1 cooperating country today) and beyond.

COST is open to all disciplines, to all novel and ground-breaking S&T ideas, to all categories of partners, to the world where mutual benefit is real.

COST in Figures

- Established in 1971
- 19 founding COST countries → now 35 + 1 Cooperating Country (Israel)
- 3 Reciprocal Agreements with International Partner Countries
- ~300 Actions starting or running
- 250 MEUR in FP7



COST Mission Statement

COST enables breakthrough scientific developments leading to new concepts and products.

It thereby contributes to strengthening Europe's research and innovation capacities.





What are COST Principles?

- Highest S&T Quality
- S&T-driven (bottom-up)
- Transdisciplinarity
- Early Stage Researchers
- Sharing knowledge
- Inclusiveness
- Leverage effect





COST Strenghts



networking of researchers via COST Actions, which are open to:

- all fields of S&T (including interdisciplinary, new and emergent fields)
- any novel and original idea (innovative)
- all partners (public and private, big and small)
- all career stages (junior and senior investigators)
- all countries (small and big), also to non-COST countries (fostering international cooperation)



COST Features

- COST funds networks: “COST Actions”
- Coordinating national research funding
- Science-driven bottom-up topics
- Inclusive - à la carte participation
- Bridging research communities – multidisciplinary



COST Countries



■ The 28 EU Member States

■ EU Acceding & Candidate Countries

- ▶ the former Yugoslav Republic of Macedonia
- ▶ Iceland
- ▶ Republic of Serbia
- ▶ Turkey

■ Other Countries

- ▶ Bosnia and Herzegovina
- ▶ Norway
- ▶ Switzerland

COST Cooperating State

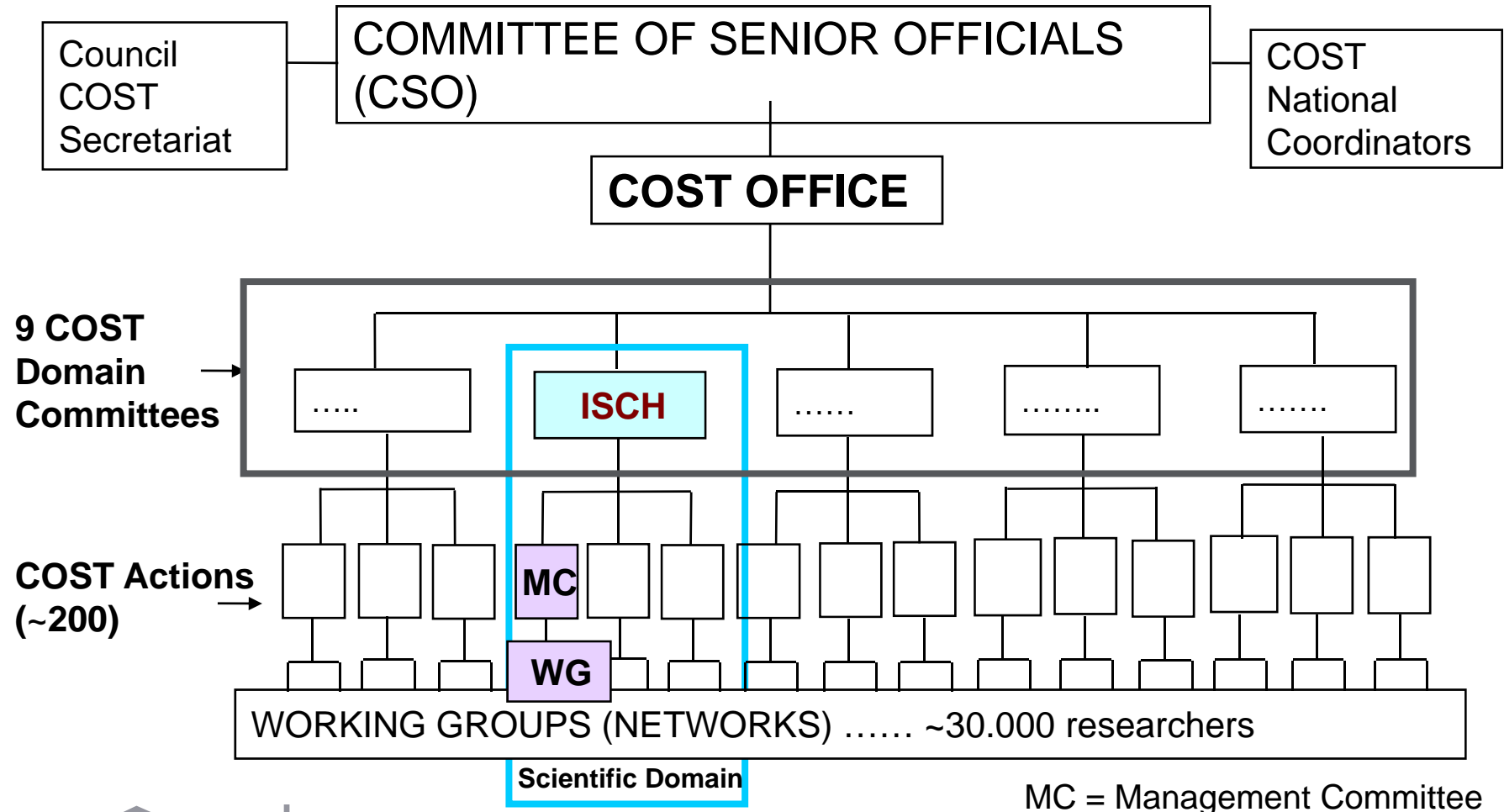
- ▶ Israel



Other countries' involvement

- Reciprocal Agreements
 - Argentina, New Zealand, South Africa
- Near Neighbour Countries
- International Partner Countries
(by Institutions) joining COST
Actions

COST Governance





COST Action Characteristics

- At least 5 COST countries
- Duration of 4 years
- Average 20 COST countries
- Within one of 9 Scientific Domains or Trans-Domain
- Expanding networks
- Obtains funds for networking activities





COST Action activities

- Science management meetings
- Working Group meetings
- Scientific workshops & seminars
- Training Schools
- Short Term Scientific Missions (STSMs)
- Dissemination & publications
- Exploratory & strategic workshops



COST Scientific Domains

BMBS	Biomedicine and Molecular Biosciences
CMST	Chemistry and Molecular Sciences and Technologies
ESSEM	Earth System Science & Environmental Management
FA	Food and Agriculture
FPS	Forests, their Products and Services
ICT	Information & Communication Technologies
ISCH	Individuals, Societies, Cultures & Health
MPNS	Materials, Physical & Nanosciences
TUD	Transport & Urban Development

ISCH Domain Description



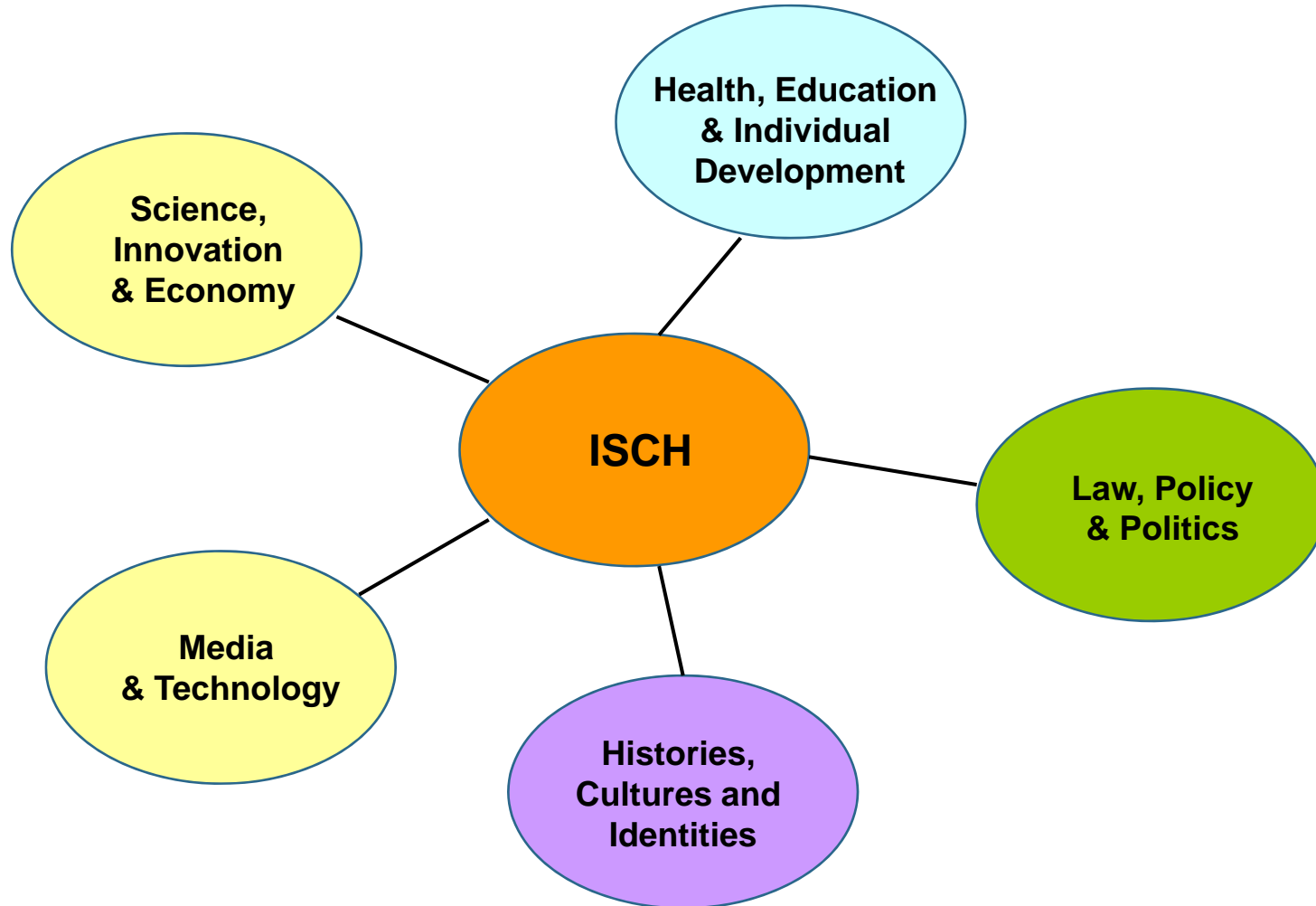
Scope:

Coordinate long-term research within Social Sciences, Humanities and Public Health on:

- The development and behaviour of individuals and groups
- Social, economical, political, cultural, historical and technological structures and processes
- Cultural diversity and a common European future

ISCH Portfolio

36 running Actions + the starting ones





2nd Call Collection 2012 – oc-2012-2

Six new ISCH Actions start this autumn:

1. IS1301 New Communities of Interpretation: Contexts, Strategies and Processes of Religious Transformation in Late Medieval and Early Modern Europe
2. IS1302 Towards an EU research framework on forensic psychiatric care
3. IS1303 Citizen's Health through public-private Initiatives: Public health, Market and Ethical perspectives (CHIP ME)
4. IS1304 Expert Judgment Network: Bridging the Gap Between Scientific Uncertainty and Evidence-Based Decision Making
5. IS1305 European Network of e-Lexicography (ENeL)
6. IS1306 New Speakers in a Multilingual Europe: Opportunities and Challenges



COST Open Call



Open Call

- Bottom-up implementation of new COST Actions
- Two collection dates a year
- Two-step process
 - Preliminary proposals
 - Full proposals
- Peer review

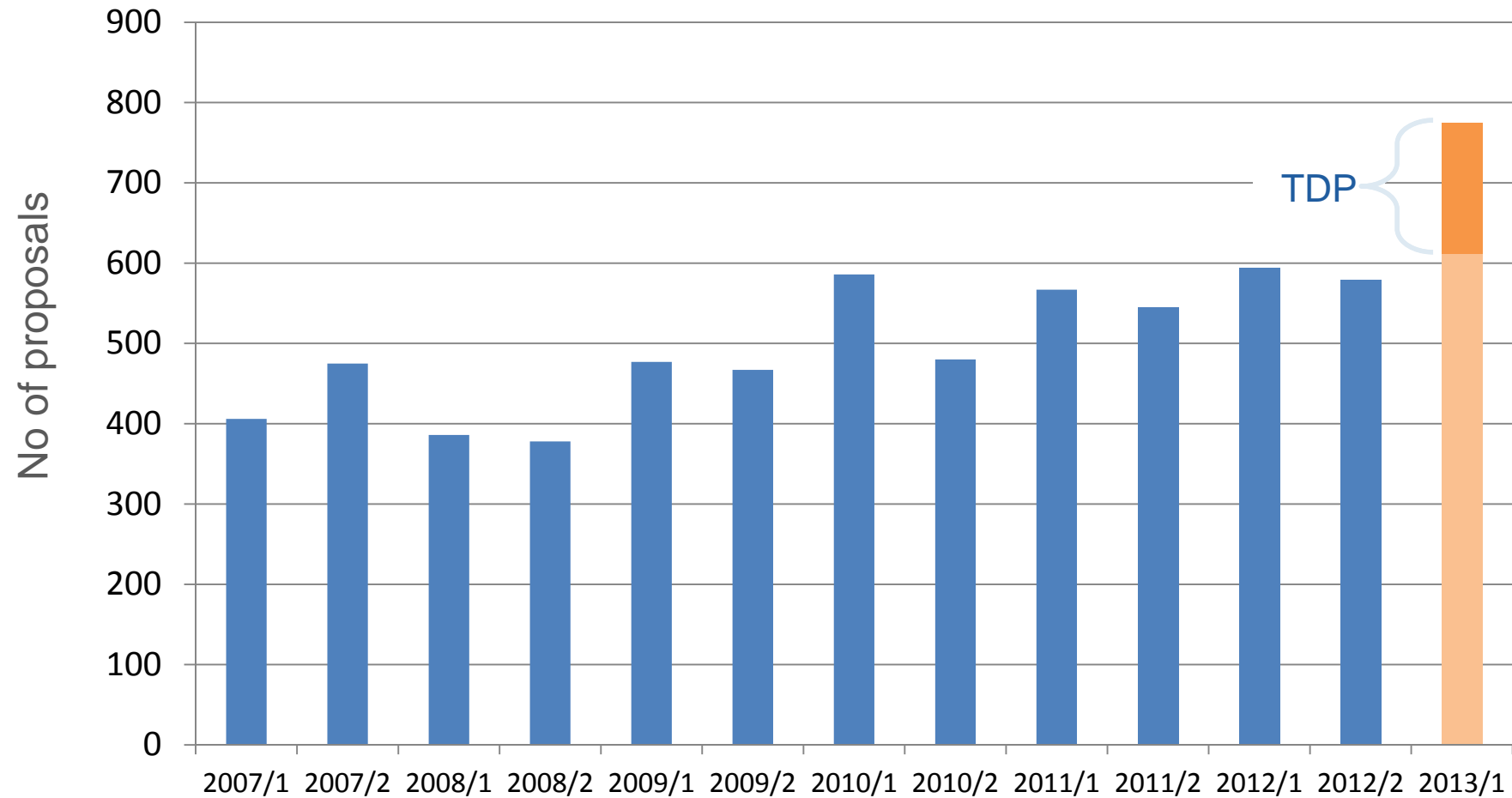


Preliminary Proposals



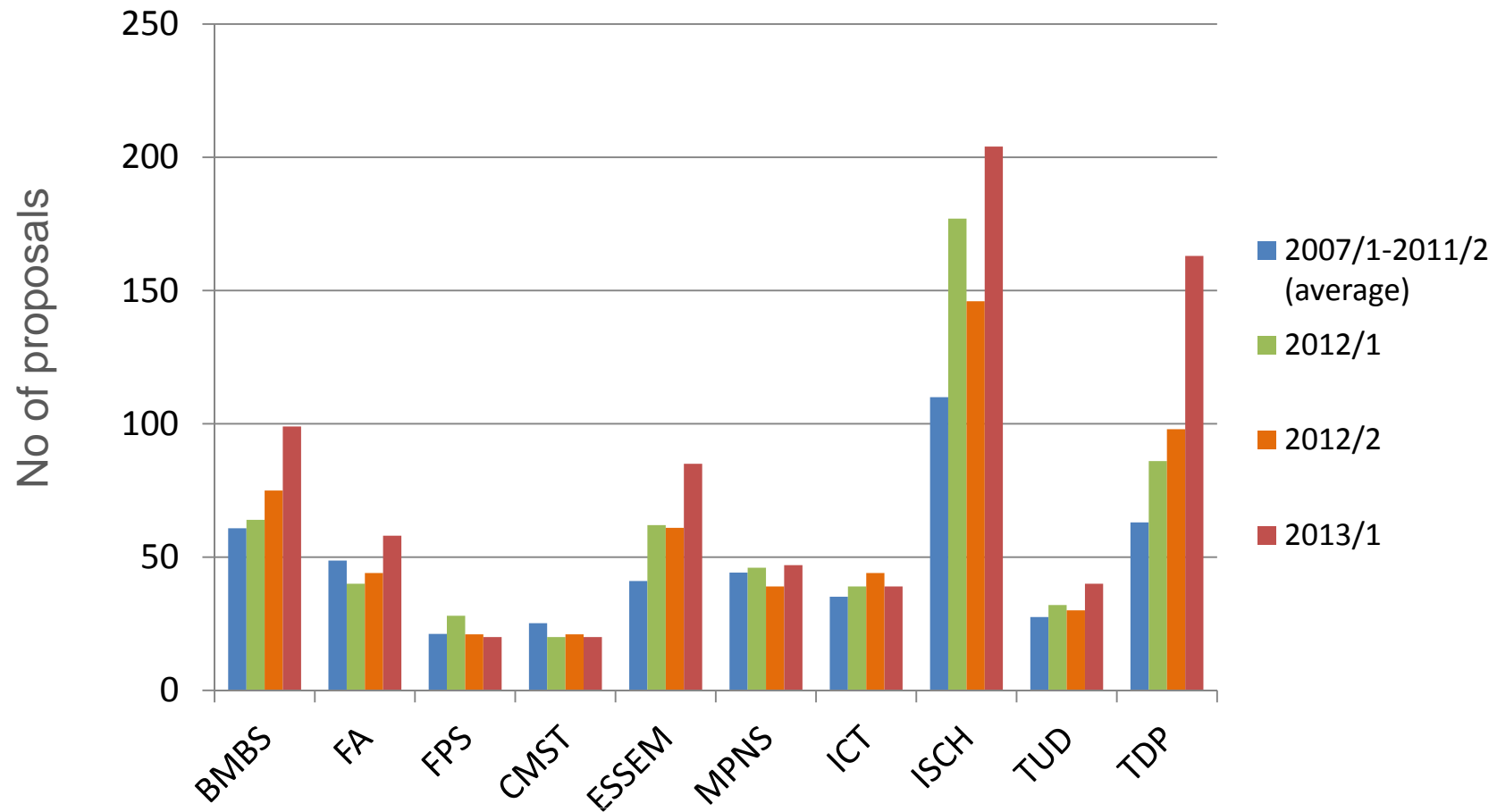
- Applicant from a COST Country
- Online submission (max 1500 words)
- Applicant indicates the preferred domain allocation
- Eligibility check by COST Office
- DC Members and DC Experts evaluate proposals
- Minimum of three assessments per proposal
- ~12 best applicants invited to submit full proposals

Pre-proposal collection (comparative data): 775 (612 + 163 TDP)



Distribution of proposals by Domain

Comparison with previous collection dates





Assessment of Full Proposals



- Individual electronic assessment of full proposals
- EEP has ~10 members, either from the nominated DC experts or external
- At the EEP, experts agree on a brief consensus report for each proposal and on consensus marks
 - < 55 marks are excluded from further assessment
 - > 55 marks are recommended to the DC Hearings
 - Consensus reports are made available to applicants



DC Hearings & Approval of New Actions



- Applicants present proposals to the Domain Committee (or the DC Executive Group, as it is done in ISCH)
- Proposals are ranked by the DC Members (or the DC Executive Group), who provide justifications for their decisions
- The COST Office prepares final list of Actions to be approved by the CSO
- For the approved Actions, the first part of the full proposal will become part of the Memorandum of Understanding (MoU)



Thank you

Dr Marc Caball

marc.caball@ucd.ie

COST ISCH Domain

luule.mizera@cost.eu

rossella.magli@cost.eu

www.cost.eu